



STOEGER P-350 DEFENSE SHOTGUN

For many, the ultimate defensive longarm is the ubiquitous slide-action, or “pump,” shotgun. Combining simplicity of operation and reasonable cost, pump shotguns are exceedingly popular for self-defense use. An excellent representative of this type is the P-350 Defense shotgun, an affordably priced shotgun manufactured in Istanbul, Turkey, and imported into the United States by Stoeger Industries.

The 12-ga. P-350 Defense, a variant of the company’s line of P-350 sporting shotguns, is a 3½” chambered slide-action shotgun that is available with either a conventional or pistol-grip polymer buttstock. The latter was received for testing. The shotgun has an overall weight of around 6½ lbs. and an overall length of 39¾” with an 18½” barrel. The polymer buttstock features a 1”

ventilated recoil pad and a molded-in sling attachment point, matched to a steel sling swivel on the shotgun’s magazine cap.

Operationally, the P-350 Defense employs a 4140 steel bolt assembly with a rotating, multi-lug head. The bolt head locks directly into a barrel extension, which is threaded onto the rear of the P-350 Defense’s barrel. This allows the shotgun to employ a lightweight 7012-T6 aluminum alloy receiver. In addition, the multi-lug, rotating-bolt system of operation provides an extremely strong lock up. The end result is a strong and lightweight shotgun.

Dual action bars have pretty much become the standard these days in slide-action shotguns, but the P-350 takes that design a step further. One of the theoretical advantages of dual action bars,

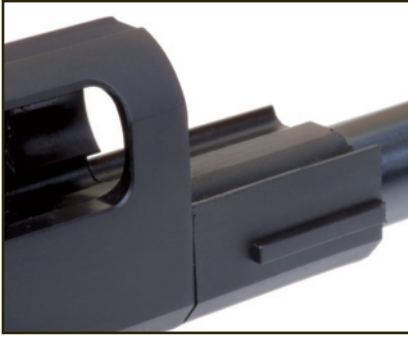
which connect the sliding fore-end to the bolt assembly, is reduced action binding as well as added strength over a single bar. Rather than just employing two separate bars, the P-350 combines both bars into a single unit the manual terms a “slider.” Manufactured from 4140 steel, this substantial piece measures 14¾” overall and is solid for its forward 5¾”.

The P-350 Defense, as with all P-350 variants, features a full-length polymer fore-end, which extends nearly all the way back to the forward part of the receiver when locked in the full forward position. As the action is cycled and the fore-end is pulled rearward, the rear third of it covers the forward area of the receiver and practically conceals the lower loading port. Due to the relatively long action length of a 3½”-chambered 12-ga. shotgun, this long fore-end is handy as it allows users to hold the fore-end a bit farther back when cycling the action.

To increase strength and stability, the P-350 features a block around the rear portion of the magazine tube, just forward of the receiver described in the manual as a “fore-end slider.” This aluminum block serves two purposes. Firstly, it acts as an area of additional support for



The P-350’s slider, shown here in the polymer fore-end, is a one-piece component that performs the role of dual action bars, virtually eliminating binding in the pump gun’s action.



STOEGER P-350 DEFENSE

MANUFACTURER: STOEGER SILAH SANAYI A.S., DUDULLU ORGANIZE SANAYI BOLGESI 2. CADDE NO. 27, 34775, UMRANIYE, ISTANBUL, TURKEY

IMPORTER: STOEGER INDUSTRIES (DEPT. AR), 17603 INDIAN HEAD HIGHWAY, ACCOKEEK, MD 20607; (800) 264-4962; WWW.STOEGERINDUSTRIES.COM

GAUGE: 12, 3½"

ACTION TYPE: SLIDE-ACTION REPEATER

RECEIVER: 7012-T6 ALUMINUM, ANODIZED

BARREL: 18½", MANGANESE-PHOSPHATED STEEL

CHOKE: CYLINDER, FIXED

SIGHTS: BLADE FRONT, NO REAR

CAPACITY: FOUR, 3" AND 3½"; FIVE, 2¾"

TRIGGER PULL: SINGLE-STAGE, 7 LBS.

STOCK: SYNTHETIC; LENGTH OF PULL, 14½"; DROP AT HEEL, 2½"; DROP AT COMB, 1½"

OVERALL LENGTH: 39¾"

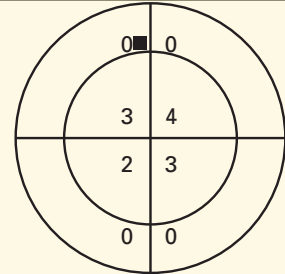
WEIGHT: 6 LBS., 7 OZS.

ACCESSORIES: INSTRUCTION MANUAL, MAGAZINE LIMITER PLUG

SUGGESTED RETAIL PRICE: \$329

SHOOTING RESULTS

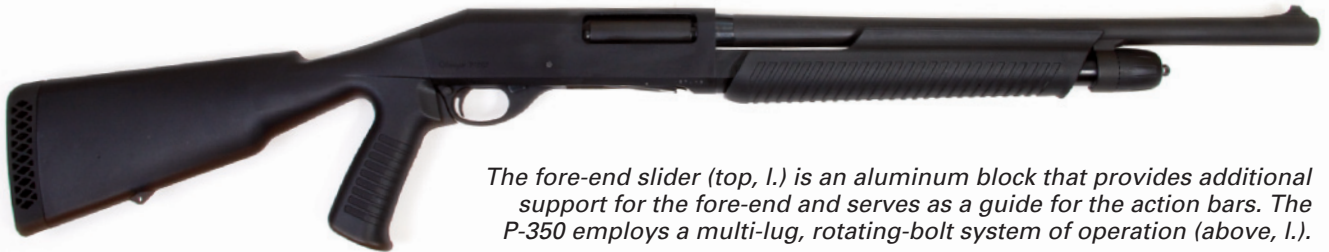
AVERAGE OF 10 PATTERNS (25 YDS.)



CYLINDER CHOKE

■ = POINT OF HOLD
FEDERAL PREMIUM VITAL-SHOK
No. PFC157 00
12 GA., 3", 00 BUCKSHOT
12 PELLETS
MEASURED VELOCITY @ 3 FT.:

TOTAL HITS	12 (100%)
21" INNER CIRCLE	12 (100%)
30" OUTER RING	0 (00%)



The fore-end slider (top, l.) is an aluminum block that provides additional support for the fore-end and serves as a guide for the action bars. The P-350 employs a multi-lug, rotating-bolt system of operation (above, l.).

the fore-end—a feature particularly helpful if the fore-end is being held primarily in this rear area. Secondly, it acts as a guide for the action bars, adding extra stability and further reducing the potential for binding.

The steel magazine tube of the P-350 Defense holds four rounds of 3" or 3½" shells, or five 2¾" shells. Operation of the shotgun is simple and straightforward, with shells loaded either directly into the tube through the open bottom of the receiver or dropped singly into the open ejection port from the side when the action is open.

A simple crossbolt plunger-type safety button located at the rear of the plastic trigger guard has a red ring on its left side, which is exposed when the shotgun is taken off "safe." An "action release lever" is located in the forward right side of the trigger guard.

The sighting system of the P350 Defense continues the theme of


simple ruggedness, with no rear sight unit and a simple blade-type front sight. The barrel of the shotgun is substantially thick without being "clubby," with a wall thickness of 0.10" at the muzzle.

The P-350 Defense received for testing exhibited extremely good fit and finish, particularly considering its modest \$329 retail price. The aluminum receiver featured an evenly applied matte finish, and the steel barrel sported a matching matte manganese phosphate finish. From a handling standpoint, the P-350 Defense proved to be compact and handy, at least as much as a full-size, 3½"-chambered 12-ga. shotgun can be. Our testers did note that the safety button and action release lever were a tad on the small side, although they did function properly.

For testing, we tried the P-350 with some Federal Premium Vital-Shok 12-ga. 3", 00 buckshot. Although this ammunition

is intended for use as hunting ammunition, the abundant power and relatively limited penetration also makes it well suited for use in a defensive shotgun such as the P-350 Defense. We also function fired the gun with 2¾" and 3½" shells as well.

Over the course of our testing, the shotgun performed well, although the 3½" shells did initially have a few double feeds when the tube was fully loaded. However, this cleared up shortly thereafter. We did note that the P-350 Defense seemed to pattern a bit low at 25 yds. This is likely due to a somewhat high front sight without a corresponding rear sight unit. Once that was taken into account, the low patterning issue was mitigated.

In the crowded self-defense shotgun market, the P-350 Stoeger should stand out due to its extreme ruggedness, impressive capabilities and utterly affordable price point. 



COLT NEW AGENT .45 ACP PISTOL

The concealed carry handgun market continues to grow. Some of these guns are completely new, but others rely on established design principles and styles. Nobody ever found a better platform to imitate or modify than the sound, sturdy—and very popular—Government Model 1911. Nobody has done this less than the original maker of the gun, Colt Firearms. With the introduction of the subject pistol, Colt offers shooters of the 21st century a modern adaptation of the 20th century classic.

The Colt New Agent is a short, light .45 ACP semi-automatic intended for concealed carry and police backup roles. It is short in the sense that the upper uses a barrel only 3" in length, and it is light because the abbreviated receiver is aluminum alloy. This pistol weighs only 24½ ozs., unloaded. In the handling sense, the New Agent is pure M1911, complete with single-action trigger and a short single-column magazine of seven rounds. As much as the gun possesses traditional

features and contours, it does have a couple of new features in cosmetics and sights.

The New Agent is relatively small, measuring 4¾" by 6¾" by 1⅜" (height, length, thickness), with that thickness figure measured across the grip panels. Contrasted with a typical M1911A1 pistol, the New Agent is more than 2" shorter in length, about ¾" shorter in height and just about a pound lighter. It is a typical recoil-operated pistol of the basic John Browning design. For self-defense, it would presumably be carried cocked-and-locked (hammer back, safety on and a round in the chamber). On the sample gun, the trigger broke cleanly at just over 4 lbs. The trigger is of the long style, which is the preference of the majority of handgunners.

A short, vertically grooved mainspring housing can be found just below an abbreviated grip safety. The tang of the grip safety has a pronounced concave curve to its top surface, designed to clear the rounded spur of the

pistol's hammer. The hardwood stocks have been slimmed down and are checkered in a bordered double diamond pattern. The thumb safety is of the original M1911 style, complete with the trim paddle. Vertical serrations on the frontstrap and a nicely executed relief groove for the middle finger, located at the junction of the trigger guard and the butt, enhance shootability.

The New Agent slide is basically the same as the Defender. It differs in the cosmetic treatment of the slide flats at the front. The New Agent slide has an angled step that slims the front end. The angle matches that of the cocking serrations at the rear of the slide. Inside, you will find a bull barrel with no barrel bushing. Two nested recoil springs are wrapped around a telescoping full-length recoil spring guide. Colt has used the same system on the Defender and the Officer's ACP pistols.

The New Agent has no sights in the conventional sense of rear notch and front post. Instead, a narrow

SHOOTING RESULTS (25 YDS.)

.45 ACP CARTRIDGE	VEL. @ 12' (F.P.S.)	ENERGY (FT.-LBS.)	GROUP SIZE IN INCHES		
			SMALLEST	LARGEST	AVERAGE
HORNADY No. 9112 200-GR. XTP/HP	804 Avg. 12 SD	287	2.14	3.78	2.82
FEDERAL No. GM45A 230-GR. GM FMJ	779 Avg. 10 SD	309	2.22	3.20	2.98
BLACK HILLS 230-GR. JHP	763 Avg. 19 SD	289	2.10	3.11	2.50
AVERAGE EXTREME SPREAD					2.77

NOTES: ACCURACY RESULTS BASED OF FIVE CONSECUTIVE, FIVE-SHOT GROUPS AT 25 YDS. FIRED FROM A RANSOM REST. VELOCITIES MEASURED WITH AN OEHLER MODEL 35P CHRONOGRAPH WITH SCREENS PLACED 12 FT. FROM THE MUZZLE. TEMPERATURE: 72° F. ABBREVIATIONS: GM FMJ, (GOLD MEDAL FULL-METAL JACKET); JHP, (JACKETED HOLLOW POINT); XTP/HP, (XTREME TERMINAL PERFORMANCE/HOLLOW POINT).

COLT NEW AGENT .45 ACP

MANUFACTURER: COLT'S MFG. CO.
(DEPT. AR), P.O. BOX 1868,
HARTFORD CT, 06144;
(800) 962-2658; WWW.COLTSMFG.COM

CALIBER: .45 ACP

ACTION TYPE: RECOIL-OPERATED
SEMI-AUTOMATIC

FRAME: ALUMINUM ALLOY

BARREL: 3"

RIFLING: RH 1:16"

MAGAZINE: DETACHABLE BOX, SEVEN-
ROUND CAPACITY

SIGHTS: SIGHTING TROUGH ON TOP OF SLIDE

TRIGGER PULL: SINGLE-ACTION, 4 LBS., 8 OZS.

OVERALL LENGTH: 6¾"

WIDTH: 1¼"

HEIGHT: 5"

WEIGHT: 24 OZS.

ACCESSORIES: SPARE MAGAZINE, LOCK-
ABLE HARD CASE, CABLE LOCK, MANUAL


SUGGESTED RETAIL PRICE: \$885



The New Agent has an Officer's-size frame mated to a 3" barrel. Its safety lever is of the original M1911 style, and its grip safety is scalloped to accommodate the Commander-style hammer (upper l.). Internally, (top) it follows the Series 80 pattern, incorporating a firing pin block safety (arrow). The bushingless bull barrel locks directly into the slide (above).

full-length groove has been milled into the top of the slide. The shooter uses this trough to roughly align the pistol with the intended target. This system is very different from most conventional M1911s, and most shooters found several magazines of practice shots necessary to get used to it. While it is certainly not suited for long-range shooting, the trough system is adequate for close-range defensive work. Understand that the system was not conceived to improve aiming, but rather to speed gun deployment. There are no sights to snag when the pistol comes out of pockets, purses or from under clothing, so the system has a considerable appeal.

At the range, several shooters noted that the New Agent was an effective pistol with some difficulty associated with managing the sharp recoil. In about 200 rounds of shooting, there were no malfunctions. Ransom Rest testing showed surprisingly good accuracy. At 25 yds., a five-shot groups averaged

less than 3". Several groups were just over the 2" mark (2.10", 2.14", 2.22"), which is better than many current full-sized pistols of the M1911 type. Colt's New Agent is a respectably accurate and generally reliable pistol of the concealed carry genre, a viable option for the new concealed carry licensee. 

The *American Rifleman* has used the phrase "Dope Bag" since at least 1921, when Col. Townsend Whelen first titled his column with it. Even then, it had been in use for years, referring to a sack used by target shooters to hold ammunition and accessories on the firing line. "Sight dope" also was a traditional marksman's term for sight-adjustment information, while judging wind speed and direction was called "doping the wind."

WARNING: Technical data and information contained herein are intended to provide information based on the limited experience of individuals under specific conditions and circumstances. They do not detail the comprehensive training procedures, techniques and safety precautions absolutely necessary to properly carry on similar activity. Read the notice and disclaimer on the contents page. Always consult comprehensive reference manuals and bulletins for details of proper training requirements, procedures, techniques and safety precautions before attempting any similar activity.